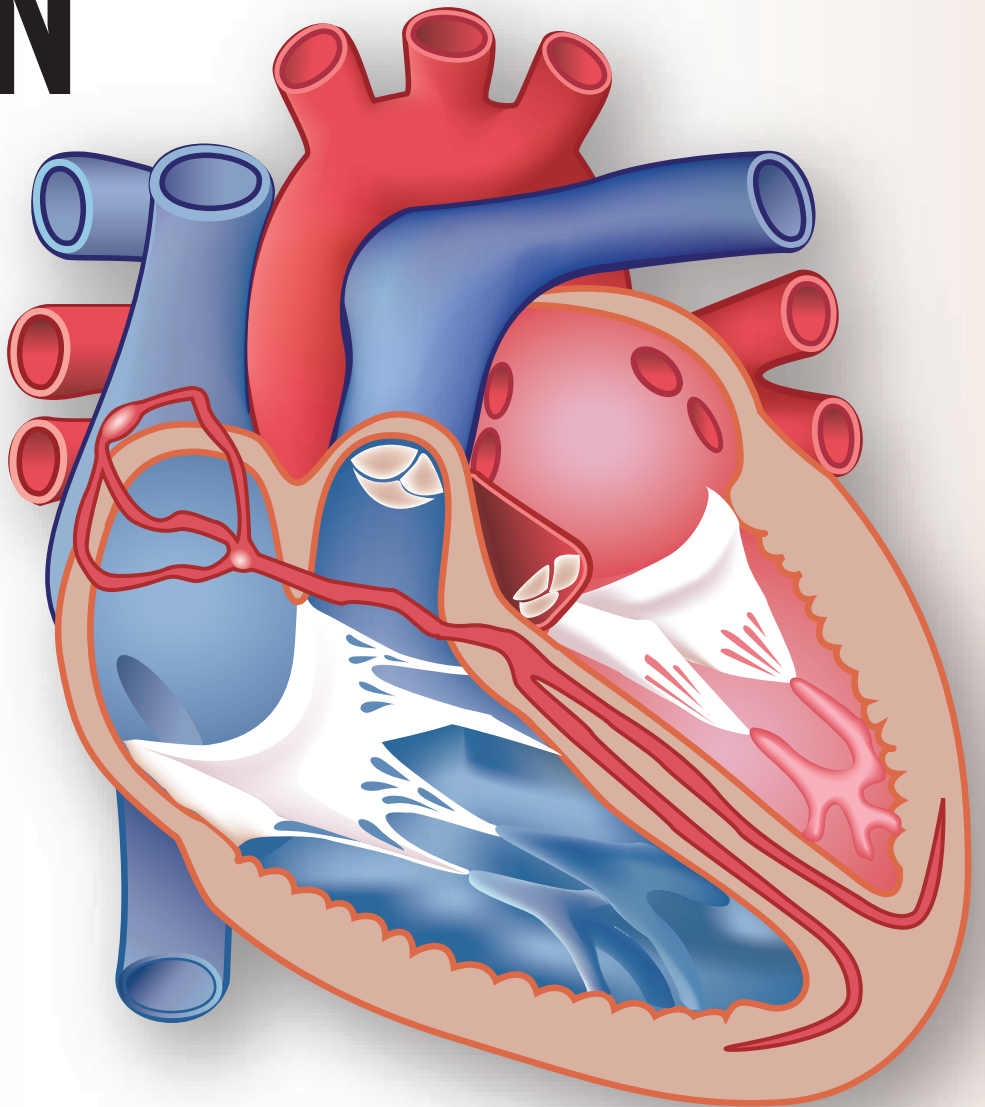


# AN *Incredible* MACHINE

## THE CONDUCTION SYSTEM

⚡ IT'S ELECTRIFYING!



THE **HEART'S RHYTHM** IS CONTROLLED BY AN **ELECTRICAL IMPULSE**



- 1 THE **IMPULSE** LEAVES THE **SINOATRIAL (SA) NODE**
- 2 TRAVELS TO THE **ATRIOVENTRICULAR (AV) NODE**
- 3 THEN TO THE **BUNDLE of HIS**
- 4 WHERE IT *divides* INTO **RIGHT BUNDLE BRANCHES** & **LEFT BUNDLE BRANCHES**
- 5 THEN INTO THE **MUSCLES** OF THE **RIGHT & LEFT VENTRICLES** AND CAUSES THEM TO **CONTRACT**.

THE **SINOATRIAL NODE** IS CALLED THE **HEART'S NATURAL PACEMAKER**

THE **BUNDLE of HIS** WAS NAMED AFTER THE **SWISS CARDIOLOGIST, WILHELM HIS, JR.,** WHO DISCOVERED THESE MUSCLE FIBERS IN **1893.**

THE **AVERAGE HEART** *beats* **about 70 TIMES** PER MINUTE  
AND **FIBERS** OF THE **SA NODE** *contract*

 **TEXAS HEART<sup>®</sup> INSTITUTE**  
at St. Luke's Episcopal Hospital

